

RALLY MASTER BACKBOARDS®



301 • 607 • 4747
301 • 607 • 4484 Fax

Thank you for purchasing a Rally Master Backboard. Your new backboard will provide years of trouble-free performance, while improving your game. Rally Master Backboards are constructed of durable, space-age plastic and corrosion resistant hardware. It is covered by an industry-leading, twenty-year warranty against structural failure due to corrosion of any part. (See warranty below).

BEFORE YOU GET STARTED

Two people can install a 10' X 12' Rally Master Backboard in less than three hours, on a structurally sound, 10' high tennis fence. Each 4' X 10' panel weighs 150 lbs. Figure about one hour or less, installation time, per 4' x 10' panel. Use additional helpers during the panel attachment procedure if necessary.

Take the time to read the instructions thoroughly to avoid time consuming mistakes and frustration during the installation procedure!

TOOLS REQUIRED

Level

7/16" deep socket and ratchet

7/16" open end wrench or adjustable wrench

(2) 6' Step Ladders

Felt Tip Marker

2"X4" lumber. Total length of pieces should equal the width of your particular backboard

Scrap lumber of various thicknesses for use as temporary shims

Electric Drill (Bits Provided)

PARTS: MISCELLANEOUS LIST

Panels

4 Horizontal Fence Brackets

Fence Bracket-Post Connectors

Hardware Pack

Vibration Dampeners

Panel Plugs

CARE OF YOUR RALLY MASTER BACKBOARD

Once installed, your Rally Master Backboard is virtually maintenance-free. It will never require painting, caulking or subsequent reinforcement like other types of backboards. Check the tightness of your fence brackets periodically to ensure that all fence and brackets remain secure. Remember only tighten panel bolts enough to slightly compress vibration dampeners. Use only mild soap and water to clean the face of the board.

A NOTE ON EXPANSION AND CONTRACTION

The inherent flexibility of the Rally Master Backboard Panel is the primary reason for its extreme strength and durability. The panels will expand and contract both vertically and horizontally as the weather temperature fluctuates. This is especially true in rapid, drastic temperature changes. It is normal for slight bows to be visible in the panels. This in no way affects durability or performance of the product. If extreme weather changes cause undesirable bowing across the face of a backboard, simply loosen the Panel Bolts, press on the center of the boards and then retighten the connections. Remember never to over-tighten the Panel Connections. This limits the panels' ability to move on the bracket.

CHOOSING A LOCATION FOR YOUR RALLY MASTER BACKBOARD

The diagram below shows possible locations on single and multi-court layouts. Note that on multi-court layouts it is advisable to avoid side-fence locations where errant, rebounding balls may interfere with play on other courts. If adjacent courts are separated by a court divider net or fences, side fence mounting locations are OK. **SEE DIAGRAM "A"**

MOUNTING INSTRUCTIONS

Do not drag your panels across your court as damage to the court and or to the panel may result.

Use caution not to scratch your panels during installation. It is recommended that the protective plastic be left on the panel fronts.

FRONT AND SIDE VIEW OF COMPLETED BACKBOARD, SEE DIAGRAM "B" AND "C"

INSTALLING THE FENCE BRACKETS

Remove the panels from the cardboard shipping cartons and place the cardboard on the court surface in front of the work area. This will protect the court surface from scratches and dings during installation.

STEP #1

Attach the Bottom Fence Bracket (The only Fence Bracket that has a Black Panel Support bolted to it) to the vertical fence posts using the Panel Bracket-Fence Connectors provided. Be certain to position the bottom of the Bottom Fence Bracket a minimum of 1" space above the court surface to permit water to drain off the court, underneath the backboard. Tighten this Bottom Fence Bracket as tight as possible to the fence. Once tightened, place 2" X 4" lumber on the court directly underneath the Bottom Fence Bracket. Next, take scrap lumber pieces and shim any space between the bottom of the Bottom Fence Bracket and the 2" X 4" so as to support the Bottom Fence Bracket. Be certain not to shim too much so as to bend or otherwise distort the levelness and plumbness of the Bottom Fence Bracket. One person should tighten the Fence Bracket-Post Connectors from the outside of the fence while the other person checks the levelness of the bottom Fence Bracket with a level on the courtside of the fence.

NOTE: Exterior tennis courts have slope built-in to allow for drainage. Therefore, depending upon where on the court you place your backboard, the bottom of the backboard may not be exactly parallel with the court surface. (I.e. the bottom of the backboard will be level but the court may not be level because it is sloping for drainage.) This is normal. **SEE DIAGRAM "D"**

Step # 2

Attach the 2nd fence Bracket to the vertical fence posts **so that the center of the punched holes are 38" above the inside bottom of the Black Panel Support that is pre-bolted to the bottom Fence Bracket.** Tighten the bracket as described in Step # 1 being certain to use a level.

NOTE: **Do not tighten this bracket all the way! Tighten just enough to keep the Fence Bracket level on fence. Some minor height adjustment of this Fence Bracket may be required during panel installation.**

NOTE: The 3rd and 4th Fence Bracket, pre-punched hole centers are 36" above the prior bracket's pre-punched holes. **This varies from the initial 38" height differential between the 2nd Fence Bracket and the Bottom Fence Bracket.**

Step # 3

Attach the 3rd fence bracket to the vertical fence posts so that the punched holes are **36"** above the center of the 2nd fence bracket.

NOTE: Do not tighten this bracket all the way! Tighten just enough to keep the fence bracket level on fence. Some minor height adjustment of this Fence Bracket may be required during panel installation.

Step # 4

Repeat all directions in Step # 3 for the 4th fence bracket.

Step # 5 INSTALLING THE GREEN PANELS

Work left to right as seen facing the backboard. Remove the protective plastic film from the back of the panel just prior to standing the panel up in the Black Support Channel. (THE FRONT OF THE PANEL HAS THE COUNTER SUNK BOLT HOLES CUT INTO IT. THIS SIDE FACES THE COURT!) Leave the protective film on the front of the panel. Place the bottom of the panel in the Black Support Channel and stand it up against the fence. One person can easily hold the panel in a vertical position against the Fence Brackets once the panel weight is borne by the Black Support Channel. The second person should now push all the panel bolts through the panel holes and Fence Bracket Holes and place a Vibration Dampener over the Panel Bolts on the **backside** of the panel.

Do not install the nuts on the Panel Bolts until *all* the Panel bolts are pushed through the panel holes and fence bracket holes. If all panel holes and Fence Bracket Holes line up, install (1) Vibration Dampener over the Panel Bolt where protrudes to the inside of the Horizontal Fence Bracket, then a washer and then a nut. If minor adjustment to the Fence Bracket height is required to obtain proper alignment of Panel Bolt and Bolt Holes, proceed to level/adjust bracket and then tighten both Fence Bracket. It may be necessary to cut fence fabric during installation.

Tighten the Panel Bolts on the left edge of the Panel first. **DO NOT OVER TIGHTEN.** Have a second person face the panel and push the middle of the panel towards the Horizontal Fence Bracket while the other person tightens the Panel Bolts on the other edge of the panel. Only tighten the Panel Bolts tight enough to slightly compress Vibration Dampener. When all the Panel Bolts are tightened on a panel you should still be able to move the panel laterally by pushing firmly on one edge of the panel. **By not over tightening, the Panel Bolts, the panel can now expand and contract laterally within the slotted connection.**

NOTE: **Prior to tightening each additional panel,** be certain to provide a 1/8" gap between each panel. This is the width of (2) U.S. quarters placed flat against each other. It is normal to have slight gaps between panels and such will in no way affect the backboard performance. In cold weather climates, the space between panels will expand and contract with the weather.

Step # 6

Place a small amount of glue on each bolt head. Smear glue around to completely cover bolt head and panel edges. Place a green plastic plug into each hole, wiping any oozing glue off the backboard with a paper towel. TAP THE PLUGS LIGHTLY TO FORCE INTO HOLE. Check to ensure the plug remains flush with the backboard surface as it dries. Apply pressure to plug as needed. Remove any excess oozing glue.

Step # 7 SEE DIAGRAM "E"

On wider backboards you will have surplus Horizontal Fence Brackets extending past the end of the outer backboard panels. These may be cut off with a hacksaw or electric saw. Place a protective cap over each Horizontal fence Bracket end.

WARRANTY

Mid Atlantic Sports, LLC warrants that all Rally Master panels and mounting components shall be free from structural failure for a period of twenty years from the date of shipping. Mid Atlantic Sports, LLC's sole obligation under the warranty shall be to repair or replace the defective part(s) only at its sole and absolute option. To make a warranty claim, please send your claim in writing to:

**Mid Atlantic Sports, LLC
Manufacturing-Warranty Division
10078 Tyler Place
Ijamsville, Maryland, 21754**

We will, at our sole and absolute discretion, determine whether a part repair or part replacement is required. If a part inspection is required prior to our determination, customer will send us the part, pre-paid freight. Customer is responsible for all freight charges on parts repaired or replacement under this warranty. Normal wear and tear, damage through Acts Of God, misuse, improper installation, vandalism, and any claim that is not for structural failure are excluded. Rally Master "Catch Nets" and support poles are not covered by a warranty.

Place Center Of Backboard As Close To Center Of Fence Section As Post Spacing Allows

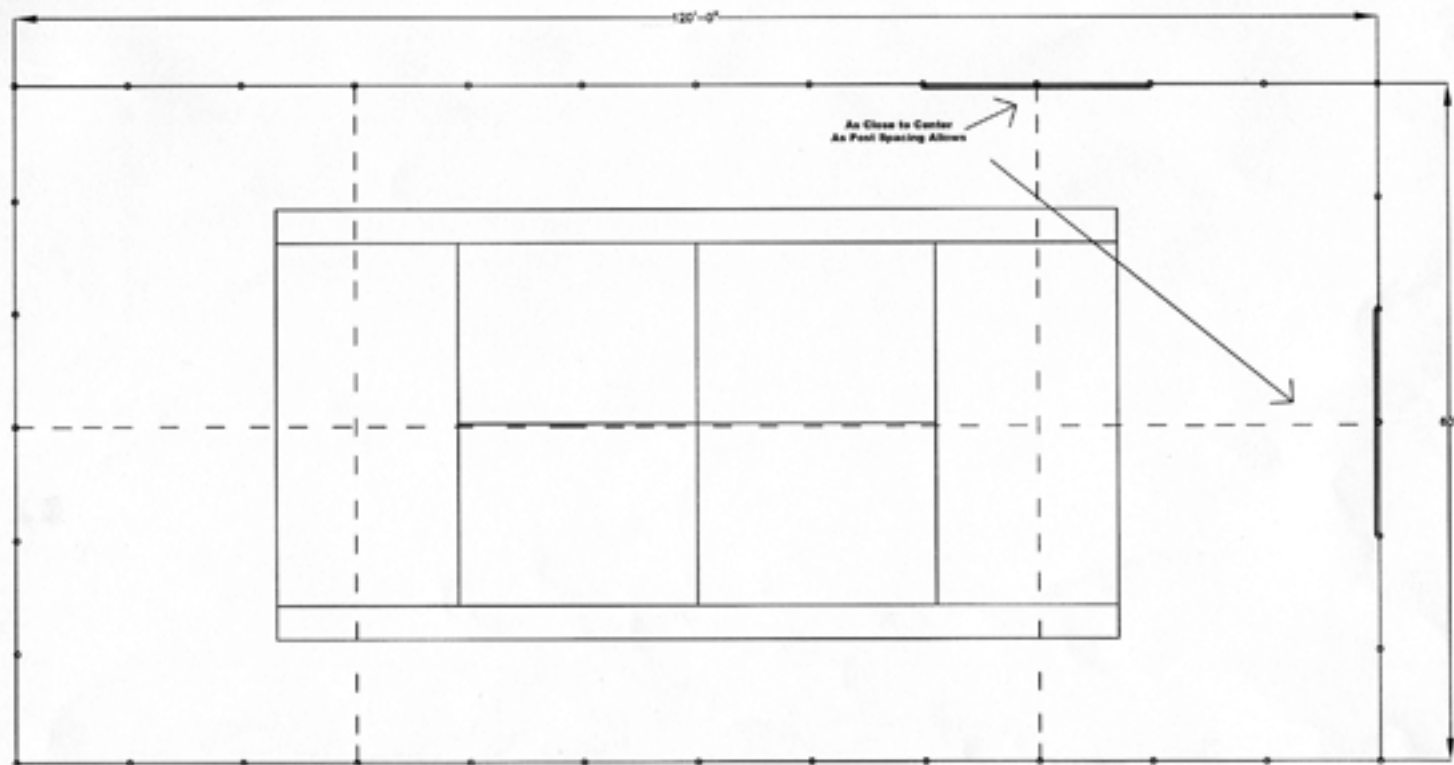


Diagram B

Rally Master (Front View)

Bolt Hole (Typ.)

36" Center to Center
Panel (Typ.)

36" Center to Center

38"
Inside Bottom
Of Bottom
Fence Bracket

Fence Bracket (Typ.)

Court

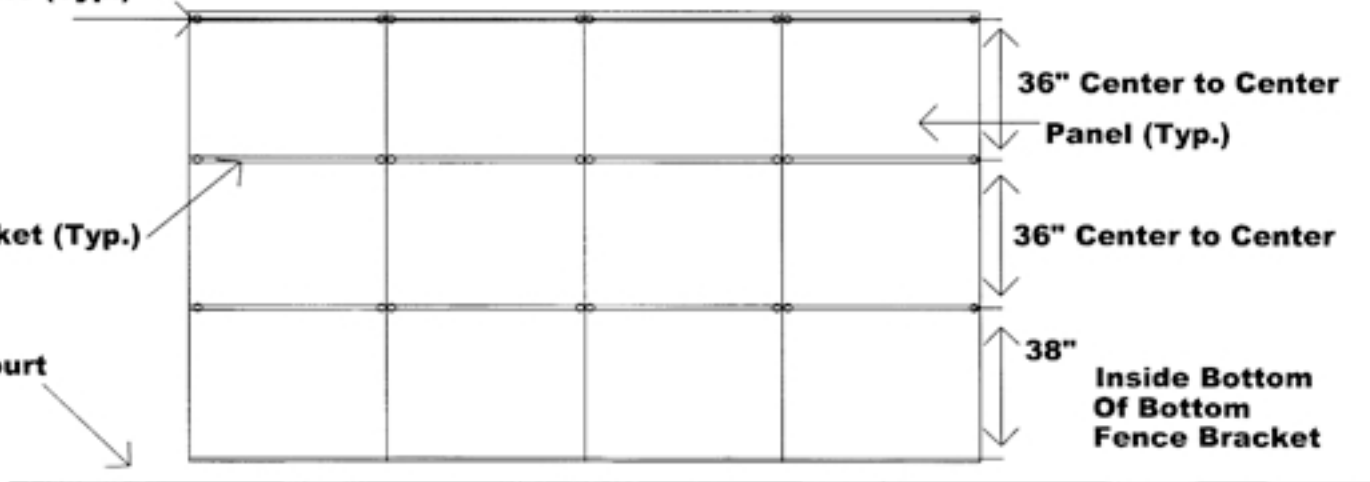


Diagram C

Rally Master Backboard (Side View)

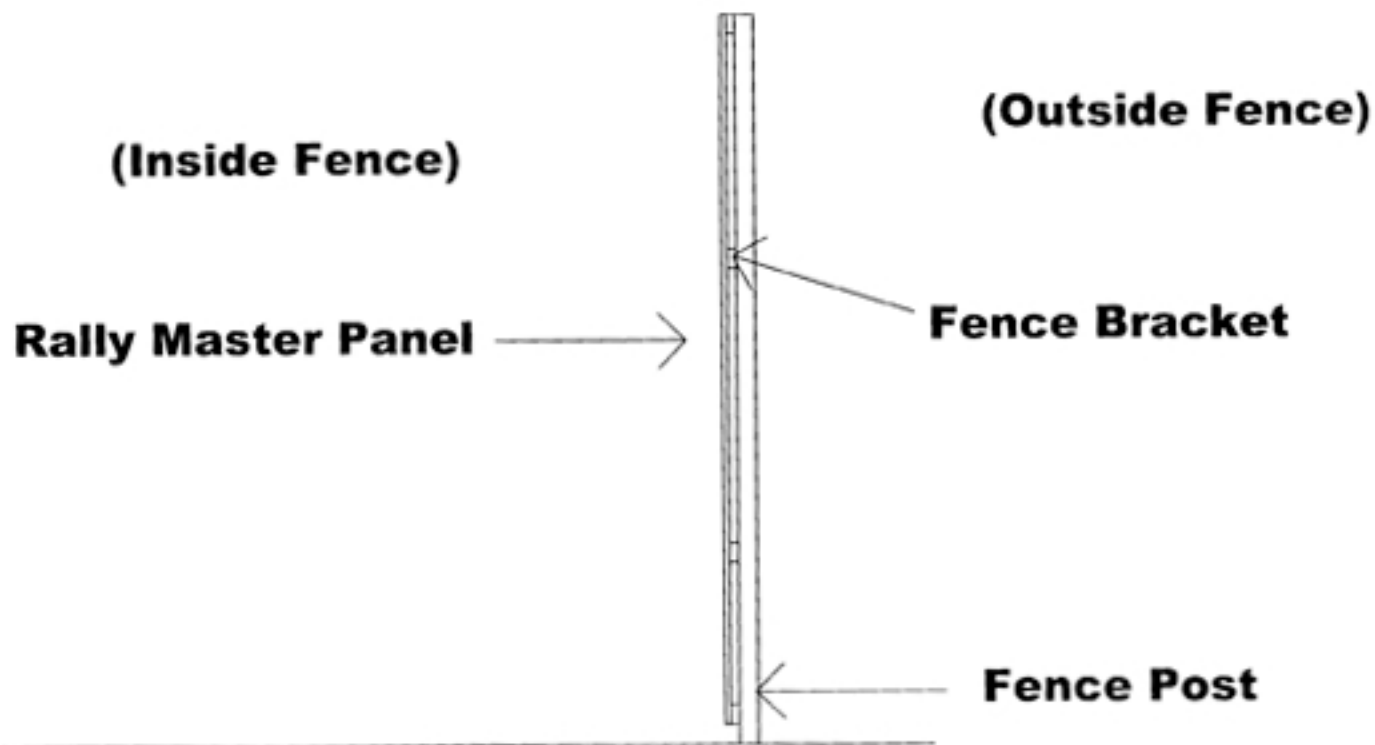
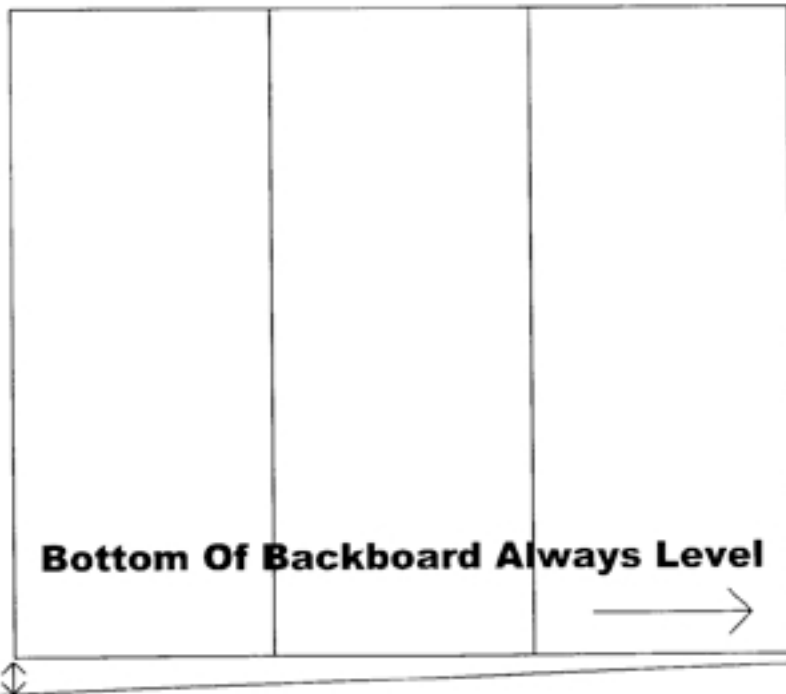


Diagram D

**Level Back Board Bottom
- Sloping Court Surface -**



Court Not Necessarily Level Due To Drainage Slope

Diagram E

**Top View Of Backboard Placement In Relation To
Fence Posts (Assumes 10' spacing on posts)**



12 Feet Wide



16 Feet Wide



16 Feet Wide On 3 Fence Post



20 Feet Wide



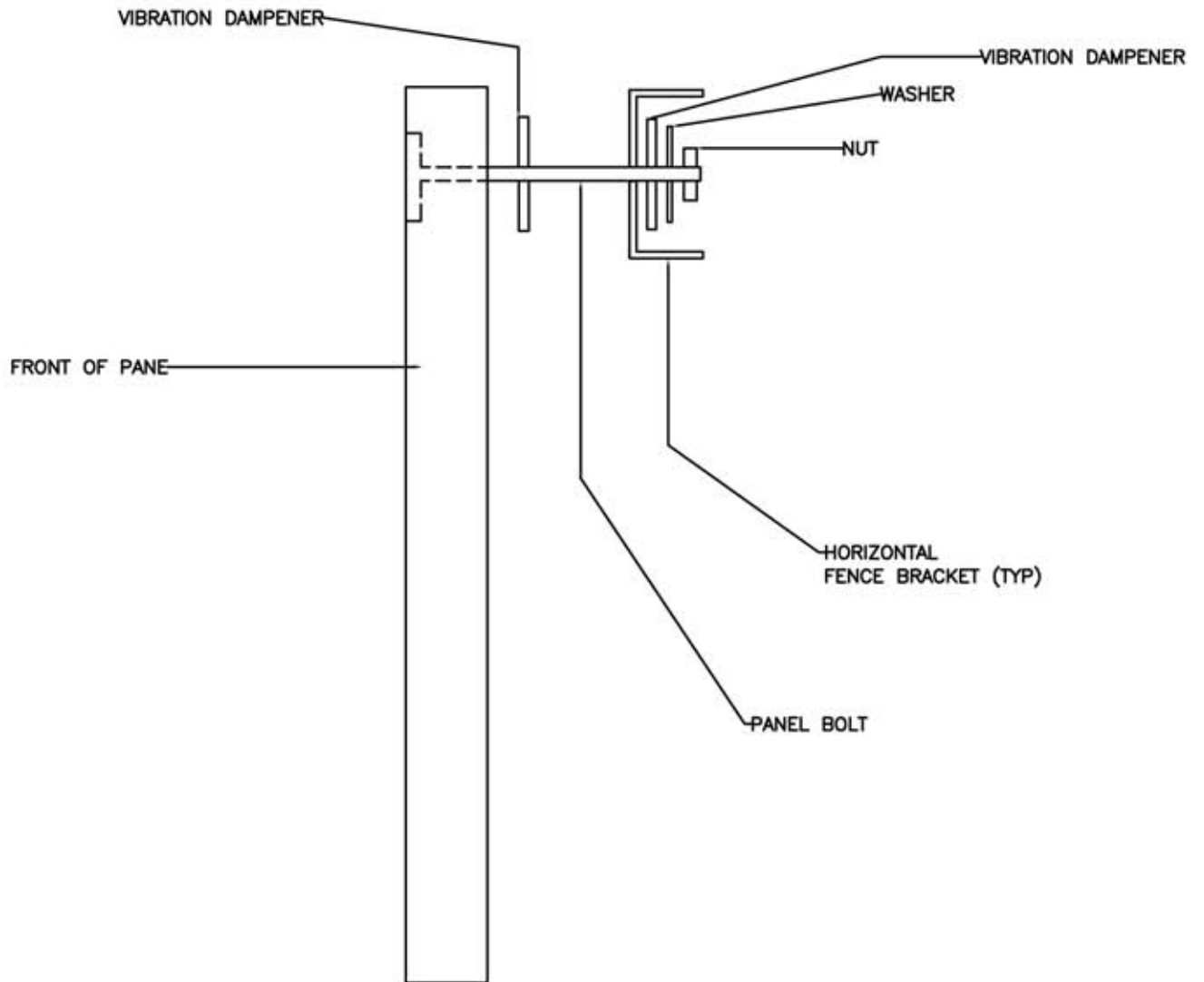
24 Feet Wide

RALLY MASTER BACKBOARDS®



301 • 607 • 4747
301 • 607 • 4484 Fax

CONNECTION DETAIL



RALLY MASTER BACKBOARDS®



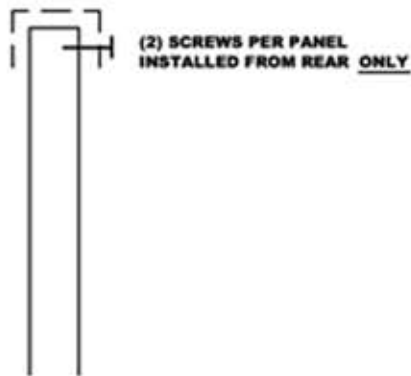
301 • 607 • 4747

301 • 607 • 4484 Fax

www.rallymasterbackboards.com

PANEL TOP TRIM PIECE INSTALLATION DETAIL

SIDE ELEVATION



| | | | |
|--|---|--|--|
| | <p>NOTE: TRIM PIECES HAVE BEEN PROVIDED TO INSURE THAT TRIM PIECE JOINT DOES NOT LINE UP WITH BACKBOARD PANEL JOINTS</p> | | |
|--|---|--|--|